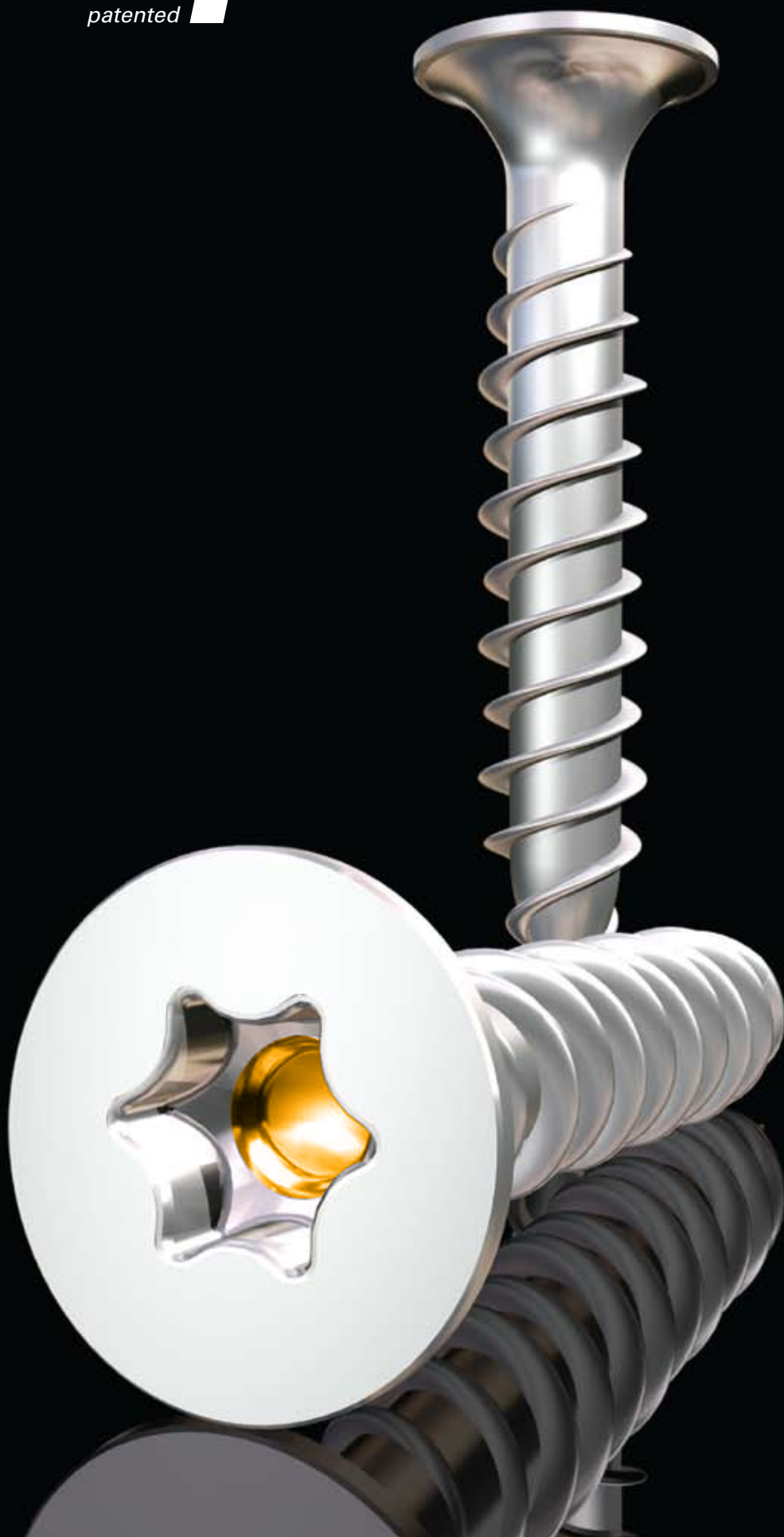


ttap[®]
patented



onesystem for all purposes

ttap®
benefits
your health

ttap® decreases pressure on the body, resulting in a healthier working environment.



SLOTTED

The oldest slot is straight slot that extends diametrically across the screw head. Problem: Tool slippage is common, which can cause damage to surrounding surfaces.



HEX (Unbraco®, Allen key)

Common problem that corners of the hex socket are damaged causing difficulties driving in the screw.



CRUCIFORM (Phillips® - Pozidrive®)

Cross-slots, which mainly appear as Phillips® slots and Pozidrive®. Common problem is that conical side walls deflect torque upwards causing "camout" and requires much power when driving the screw.



HEXALOBULAR / HEX-LOB (Torx®)

The hexalobular slot remedies many of the disadvantages that are associated with for instance cross-slots. For all that, the hexalobular slot still has some serious disadvantages. Since the walls are straight, the slot depth will be limited, particularly in conical screw heads, or so-called countersunk heads. If the depth becomes too great, the walls of the screw head will become very thin at the bottom of the slot, and the screw head may easily break off in this area.

Due to the depth limitation, the engagement between the tool and the slot will not be very good, and the tool may wobble as the screw is screwed in or out. The limited engagement between the tool and the screw also causes the screw to hang badly when the tool and the screw are held approximately horizontally. For craftsmen who have to screw a great number of screws, it is of great importance that the screw hangs on the tool until the screw has caught in the material into which it is being screwed. As the tool wears, its ability to retain the screw will worsen.



TTAP DRIVE SYSTEM (ttap®)

ttap® is 100% a hexalobular recess, backward convertible – but without the disadvantages! ttap® has all the advantages and no disadvantages compared with other recesses.

ttap® is an improved new hexalobular (hex-lob) drive system without the disadvantages of the generic hex-lob.

ttap® is a drive system designed to work excellent with all types of assembling, including craftsmanship and one hand operation. ttap® enters collated screws easier in automatic screw driver feeders.

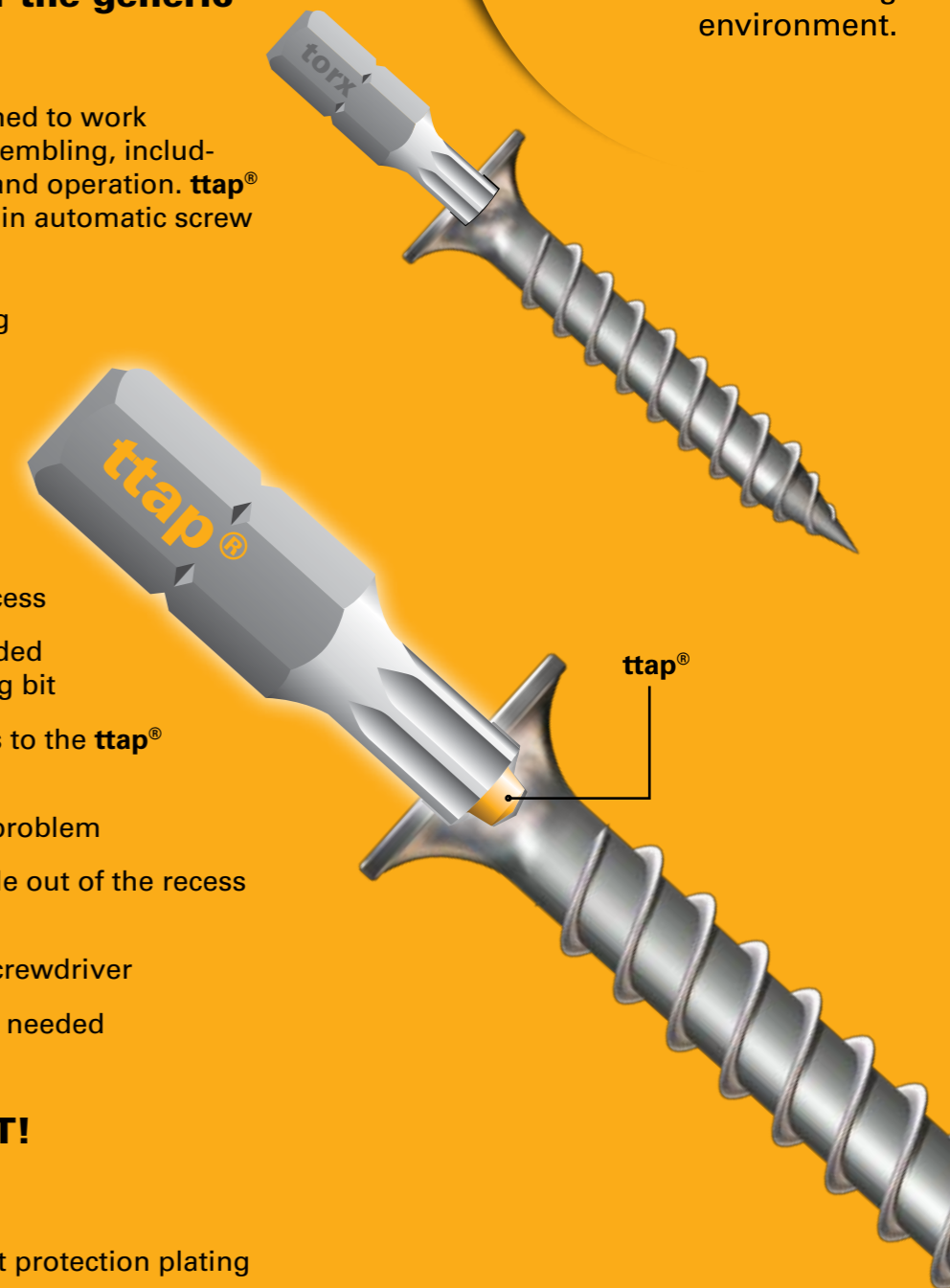
ttap® makes screw assembling easier and at lower costs:

IT'S EASIER!

- Screwdriver enters the recess more easily
- Screwdriver "stick fit" in recess
- No magnetic bit holder needed and no steel splinters to clog bit
- ttap® recessed screws sticks to the ttap® screwdriver
- One-hand operations is no problem
- Screwdriver does not wobble out of the recess (Does not cam out)
- Easier engagement of the screwdriver
- No end-load on screwdriver needed

IT'S COST EFFICIENT!

- Reduced drive tool usage
- Improved productivity
- Reduced risk to damage rust protection plating
- Better profits and job morale

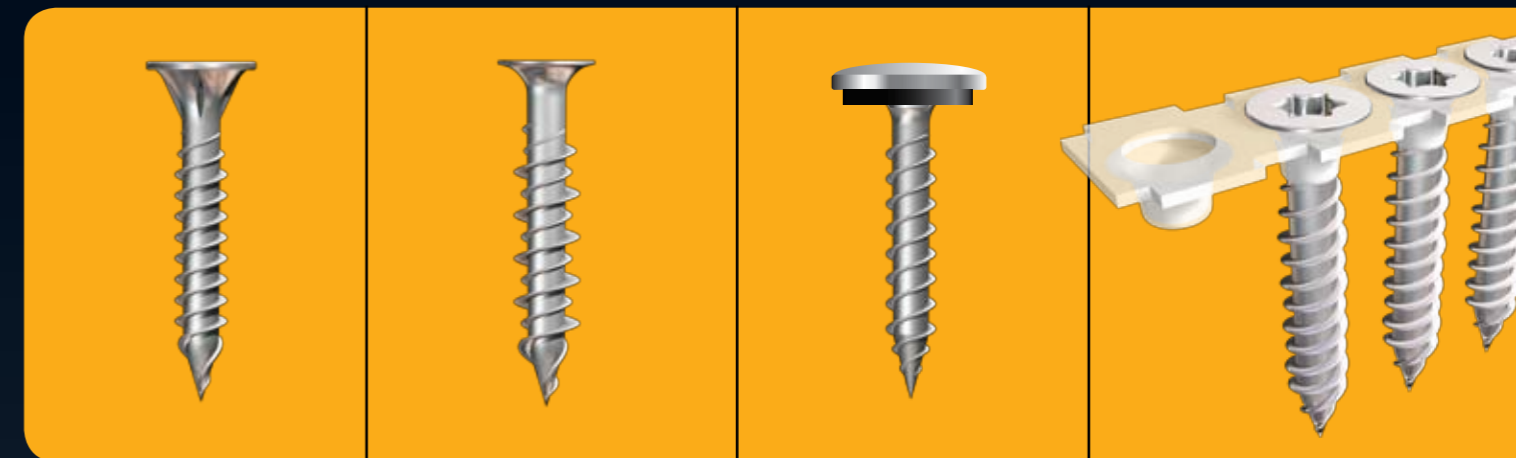


onesystem

...is all you need

ttap[®] is a versatile system that is suited for all types of screws.

Below are presented just a few of the many types of screws where **ttap[®]** can be implemented.



Terrace screw

Besides **ttap[®]**, the decking screw encompasses three other major advantages, such as the point, the head and the thread. The patented Carvin Point™ enters easily into the wood and has documented less splitting wood effect. As for the head, the newly developed Sunk-Stop™ head prevents driving the screw too far into the wood. Double thread makes the screws entering fast.

Gypsum screw

Drywall screw **ttap[®]** has a super sharp "thread in" point. The well functioning Noburr™ head eliminates paper burr and creates professional finish when screw is inserted. HiLo thread for both steel and wood applications.

Farmer screw

The system inherits the **ttap[®]** system enabling dramatically decreased head size, resulting in a much more economical and aesthetic choice.

Collated screw

ttap[®] works perfectly in collated screws, whereas **ttap[®]** enters more easily into the screw.



OTHER SCREWS

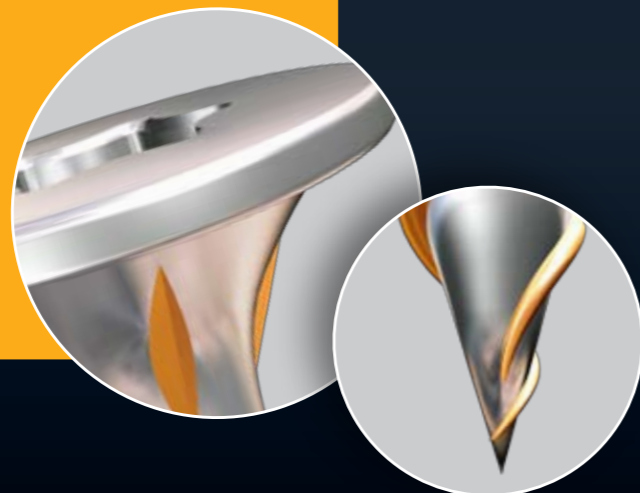
- Chipboard screws **ttap[®]**
- Truss head screws (installation screws)
- Hobau screws (coarse thread with small head/ribs under the head)
- Stainless steel screws
- Convex™ - ventilation screw
- and more...



spotlight terracescrew ttap®

Besides ttap®, this decking screw encompasses three other major advantages:

- **POINT** – the patented Carvin Point™ enters easily into the wood and has documented less splitting wood effect
- **HEAD** – the newly developed Sunk-Stop™ head (patent application) prevents driving the screw too far into the wood.
- **THREAD** – optimized thread makes the screws entering fast.



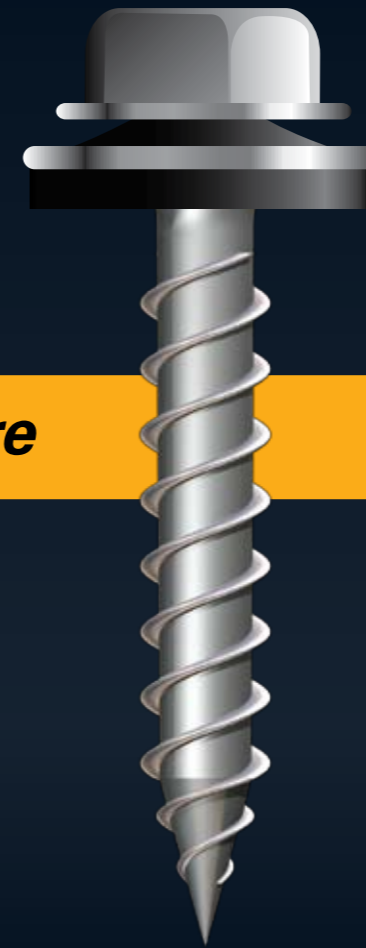
casestudyAztec

Aztec Nordic Ltd is one of Europe's leading producers of coated sealing fasteners for roofing and cladding.

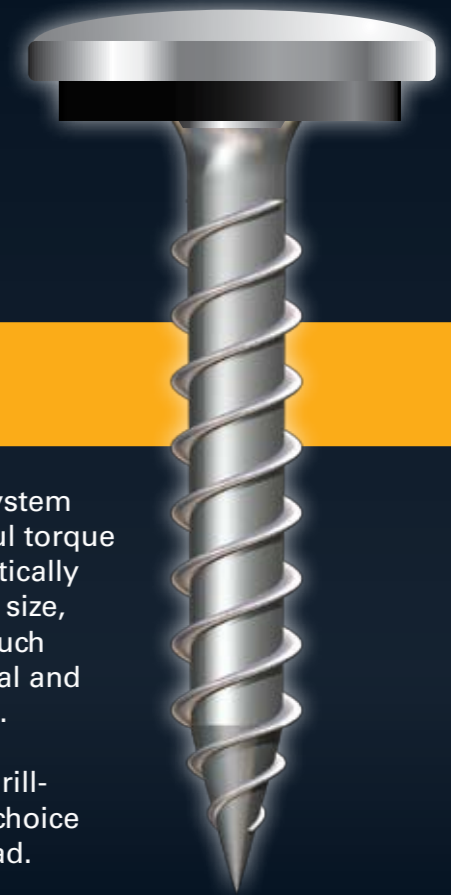
- Annual capacity is nearly 1000 million pieces
- Launched ttap® Farmer Screw in 2006



before



after



The ttapdrive system inherits powerful torque enabling dramatically decreased head size, resulting in a much more economical and aesthetic choice.

Available with drill-point and your choice of colour on head.

chromatefree NANO coating

We continuously strive to be at the forefront of utilizing new coating technology.

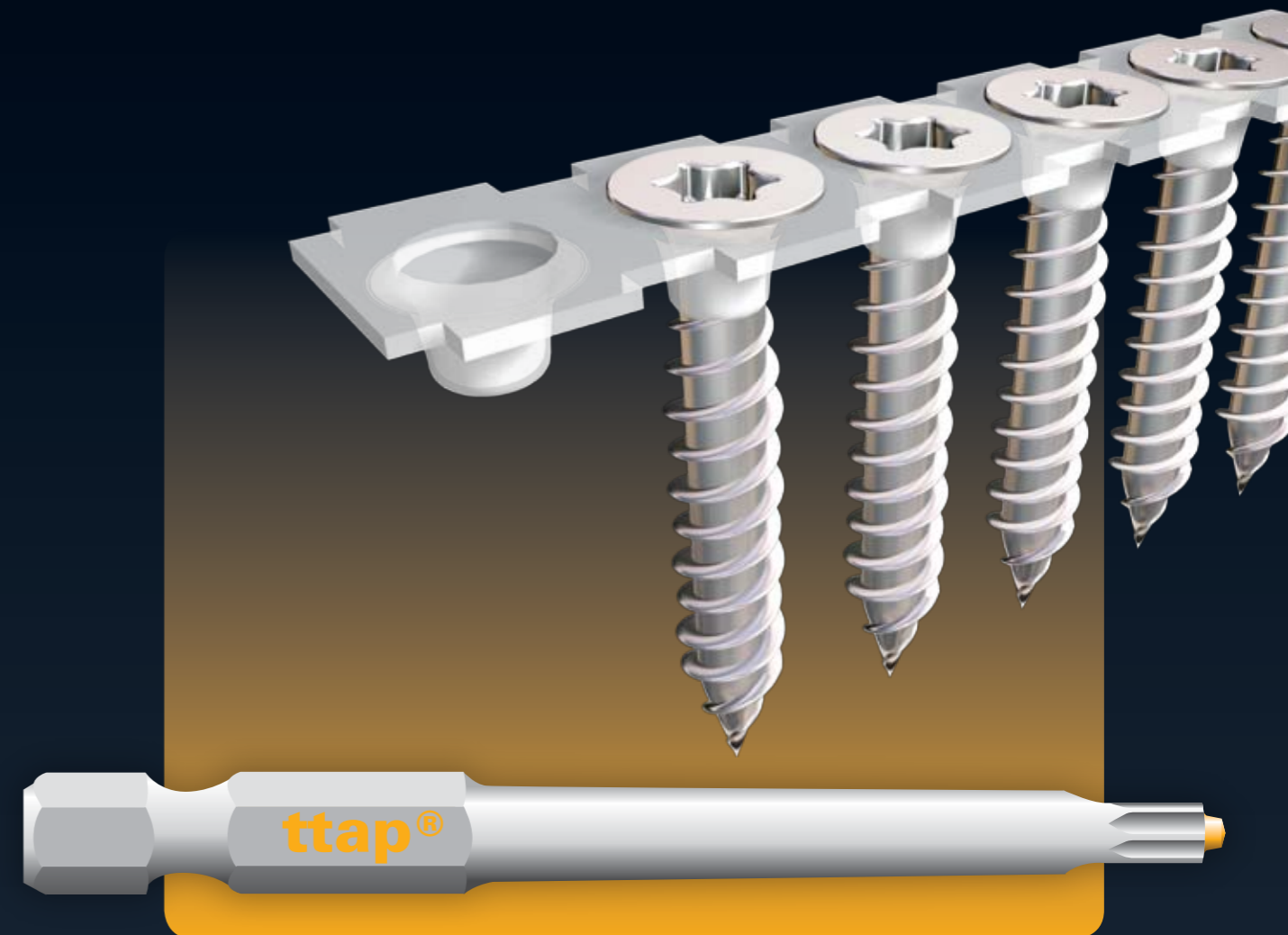


As for outdoor coating, we've used Magni coating, and recently we introduced a chromate free NANO coating for 200, 500 and 1000 hours.

ttapbits and screws

for all automatic screw machines

Collated screws are rapidly becoming attractive among professional users.



In order to make it simple to change to top of the line screws with **ttap**[®] recess, we offer **ttap**[®] bits for all types of automatic screw machines. We provide **ttap**[®] bits for alle types of machines, blister packed for self service.



ttap®

INFAST AS Ekraeveien 65c, N-0757 Oslo, Norway.
Tel +47 986 06 651 & +47 22 50 47 53 Fax +47 22 50 47 56
E-mail info@ttapdrive.com
www.ttapdrive.com